

Understanding the Rewilding of Cape Cod: A curriculum unit for
middle school learners



Pre-Learning – Understanding Shark Anatomy and Senses



[Shark Anatomy – AWSC YouTube](#)



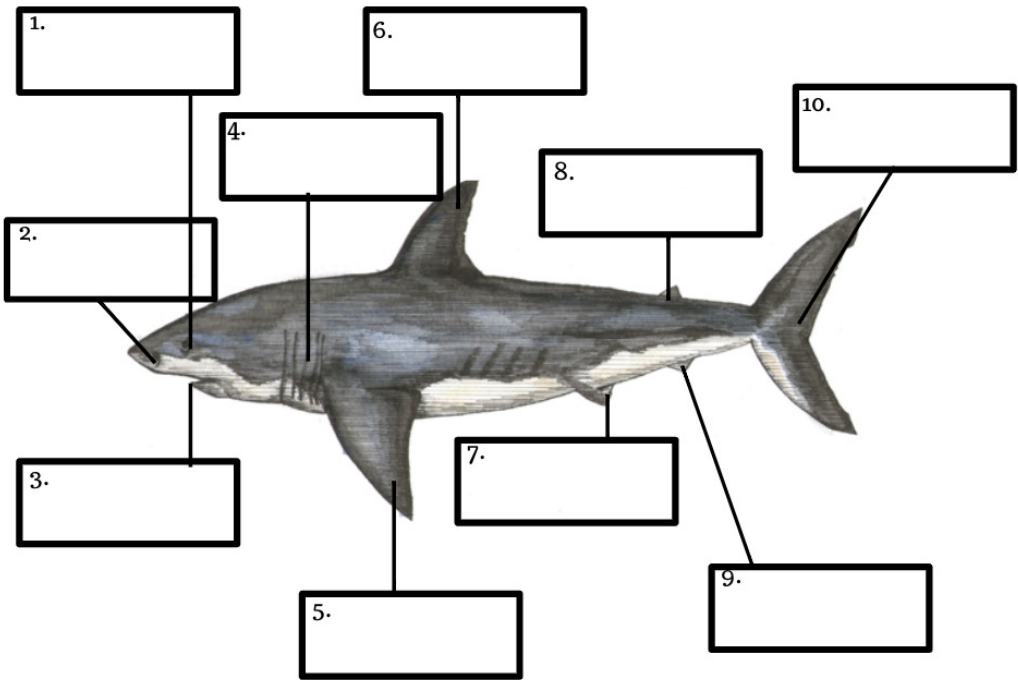
NAME _____

DATE _____

CLASS _____

Label the diagram below with the correct anatomy terms.

- Dorsal Fin
- Caudal Fin
- Pectoral Fin
- Gill Slits
- Scales
- Pelvic Fin
- Nares
- Eyes
- Teeth
- Anal Fin





[Shark Senses – AWSC YouTube](#)

Physiology of a white shark

How do white sharks propel themselves through the water?

What are external anatomy features that protect white sharks?

How do sharks breathe? What anatomy features enable this?

Correctly label the senses of a white shark on the diagram below.

